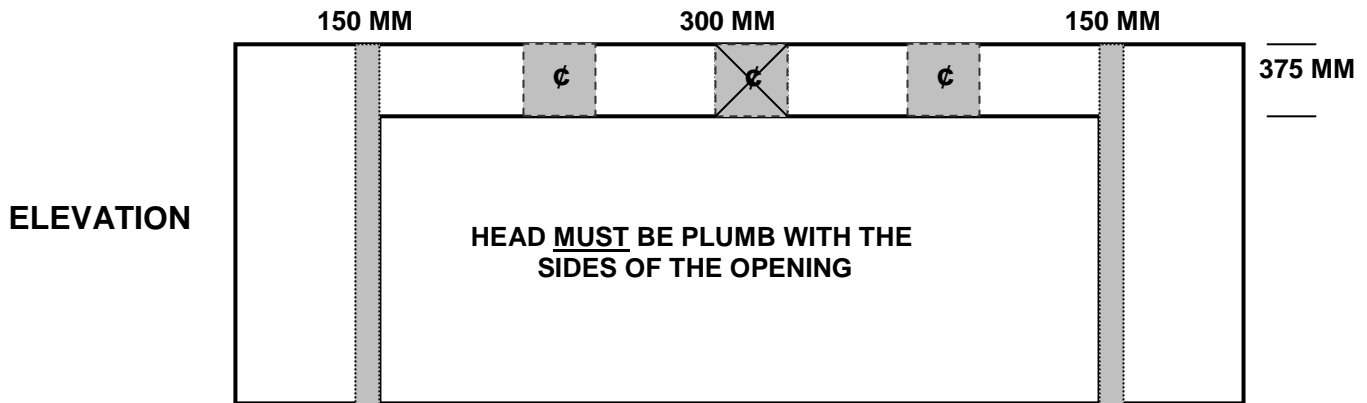


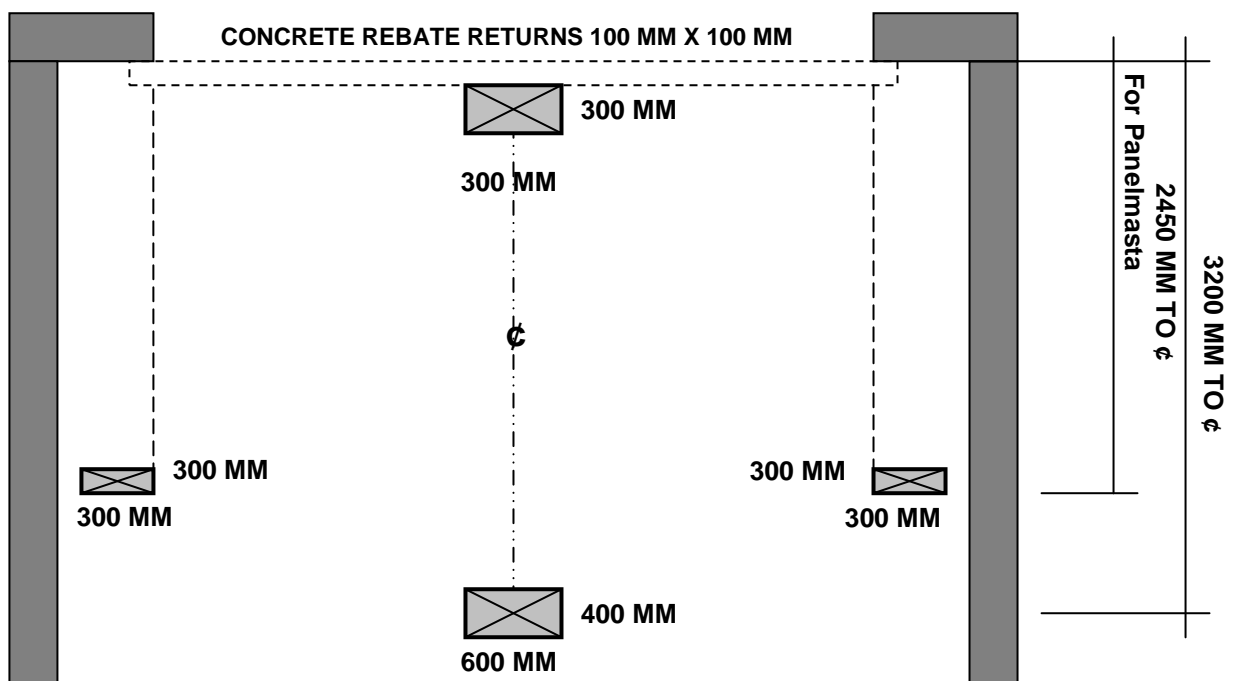
DOWN'S DOORS NOGGIN DETAIL FOR B&D PANELMASTA DOORS - WITH GD011 OPENER UP TO 2400MM HIGH & UP TO 5500MM WIDE

Elevation please note that fixing for blocks (300mm wide) in head are from opening height up, 3 blocks are required to be fitted across the head as shown.
Fixing for side room (150mm) either side of opening is from floor to ceiling



IF ARCHITRAVE IS TO BE FITTED, PLEASE CONTACT YOUR REPRESENTATIVE (IDEAL APPLICATION IS NO ARCHITRAVE)

PLAN VIEW



- THESE NOGGINS INSTALLED IN THE CORRECT POSITIONS ARE ESSENTIAL FOR THE PANELMASTA INSTALLATION.
- IT IS THE CUSTOMER / BUILDERS RESPONSIBILITY TO INSTALL THESE FIXING POINTS PRIOR TO INSTALLATION OF THE PRODUCT. ANY CALL BACK RELATING TO IMPROPER, OR NO FIXING, WILL BE CHARGED AT A SERVICE CALL RATE.
- ALL FIXINGS ARE TO BE FLUSH WITH THE GYPROCK.
- PACKER JAMBS WILL BE NEEDED WHERE THE PIERS AND HEAD OF THE OPENING ARE OUT OF PLANE BY MORE THAN 10MM.
- GPO TO BE INSTALLED AT 3650MM BACK IN LINE WITH THE 3250 NOGGIN FOR AUTOMATIC OPENER
- GARAGE MUST BE FULLY CLEAR, AND HAVE VEHICLE ACCESS AND POWER ON SITE, FOR INSTALLATION TO PROCEED.